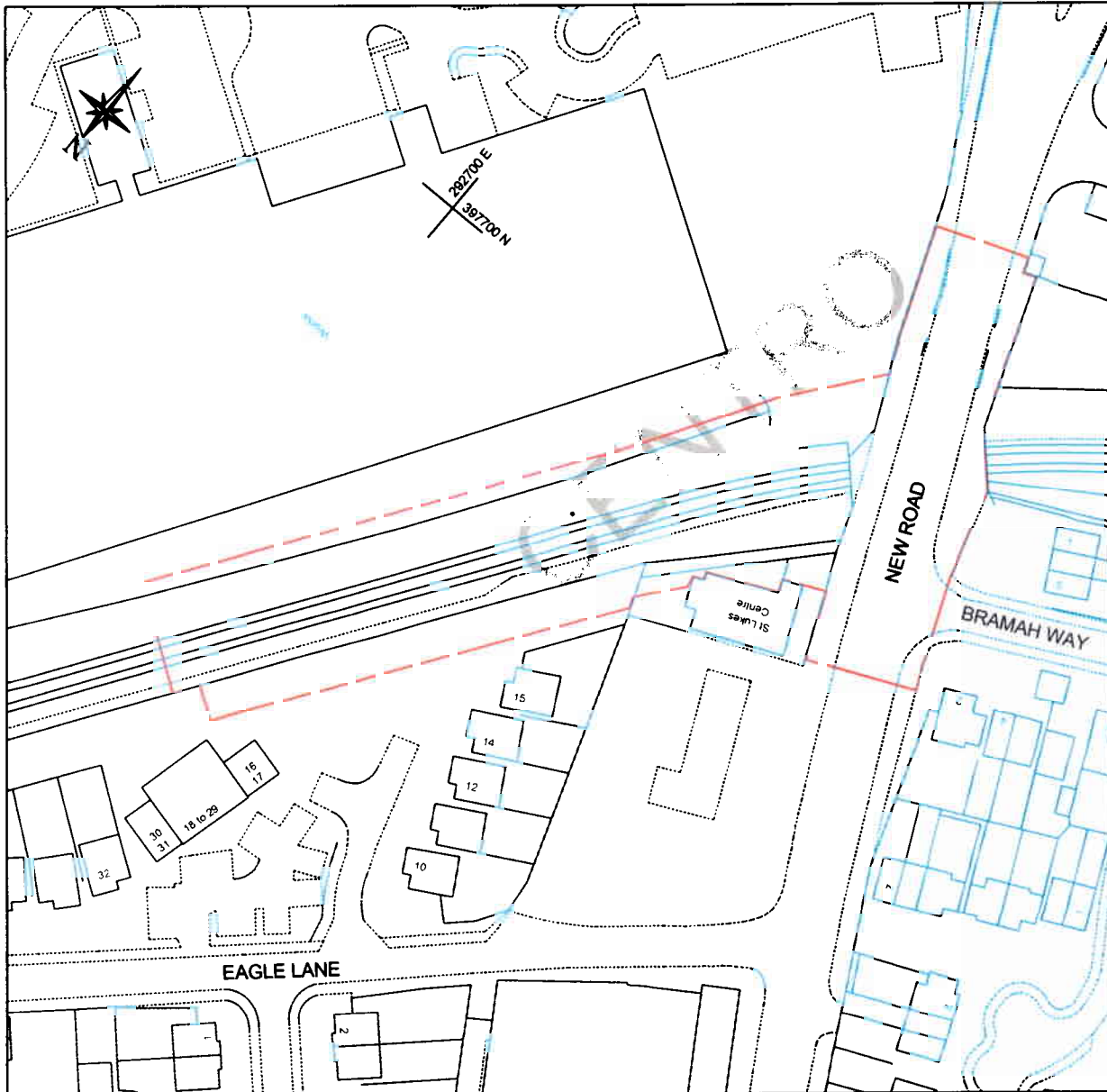


MIDLAND METRO
(WEDNESBURY TO BRIERLEY HILL AND MISCELLANEOUS AMENDMENTS) ORDER

SANDWELL METROPOLITAN BOROUGH

APPLICATION FOR PLANNING DIRECTION



Proposed Stop Location - Great Bridge



Reproduced from the Ordnance survey map base with the permission of the controller of Her Majesty's Stationary Office. Crown Copyright
© Crown Copyright
Unauthorized reproduction infringes Crown Copyright and may lead to prosecution or civil proceedings.

Title Midland Metro (Wednesbury to Brierley Hill) Proposed Stop Location Great Bridge				1 ALLOTT & LOMAX Fairbairn House, Ashton Lane, Sale, Manchester, M33 6WP Tel: (0161) 962 1214 Fax: (0161) 905 5855			
Date	Drawn	Checked	Approved	Scale	Drawing No.	Rev	Status
3/4/03	C.H			1:1250	22216 / 502 / 02		